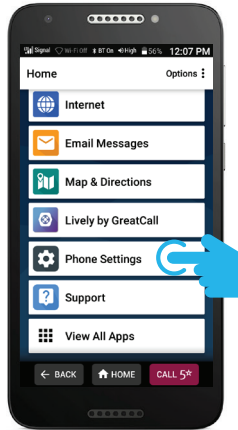


learn more

# How to Set a Lock Screen Using a Pattern

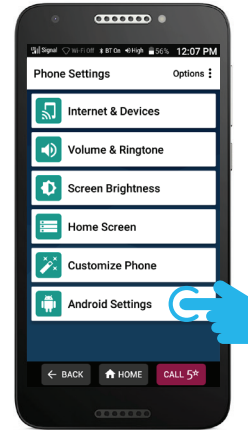
1

On the Home screen, Scroll and TAP Phone Settings



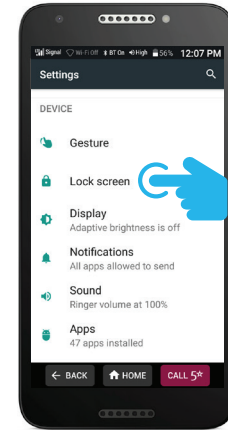
2

Scroll and TAP Android Settings



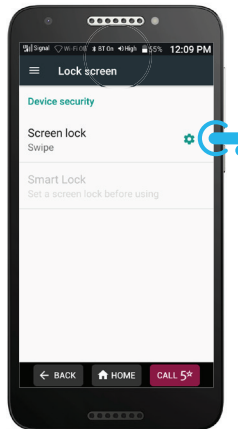
3

TAP Lock Screen



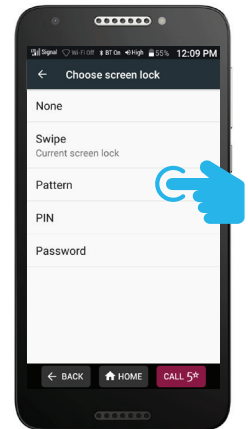
4

TAP Screen lock.



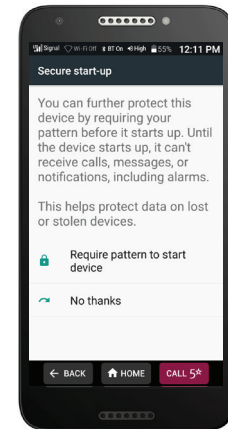
5

TAP **PATTERN.**



6

TAP Require pattern to start device or TAP No thanks.



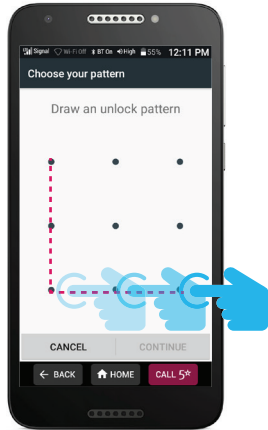
learn more

# How to Set a Lock Screen Using a Pattern (cont.)

7

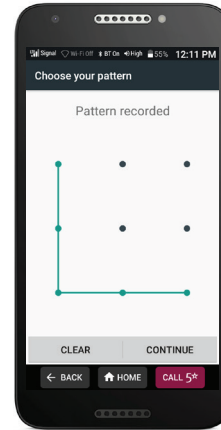
Draw a pattern connecting at least four dots and TAP CONTINUE.

IMPORTANT: Write down your pattern and store it somewhere safe.



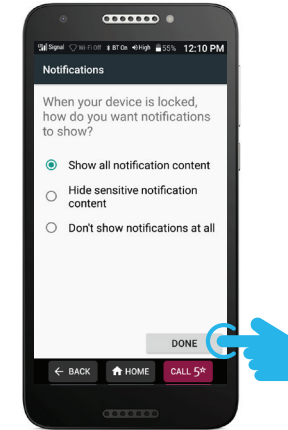
8

Your pattern will be recorded TAP CONTINUE.



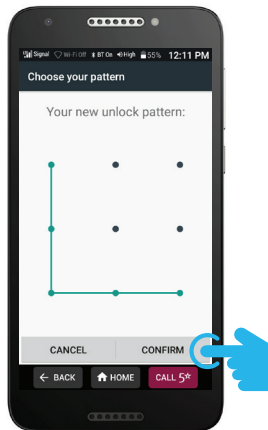
9

Choose how you'd like notifications to be displayed and TAP DONE.



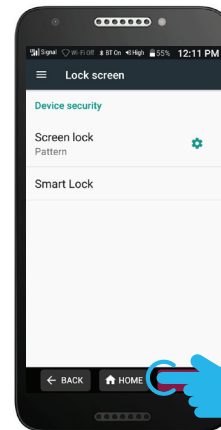
10

Your lock screen and pattern are now set. TAP CONFIRM.



11

TAP HOME.



12

You are ready to use your phone.

